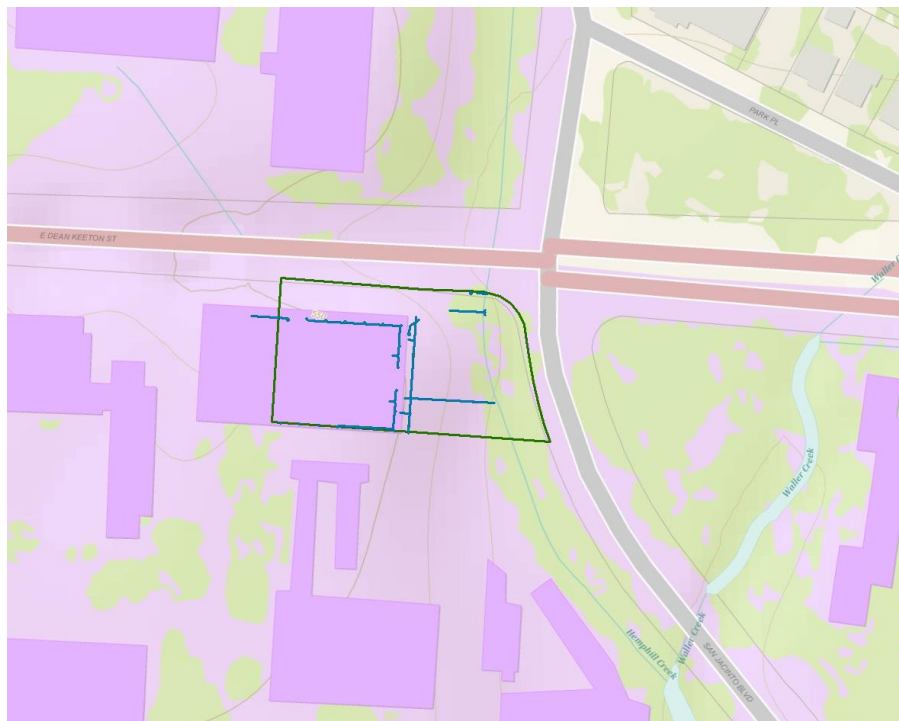


Group 5: Project Proposal

Below is the base map for ECJ. The focus of this project, as described in the previous report, is on the ECJ parking lot. We have contacted Dr. Barrett about the scope of our project and he has invited us to come out to Pickle Research Center to discuss our ideas and any problems we might encounter. Originally, we planned to use porous pavement and a rain garden to transform the parking lot, but we are still researching alternative methods. We have not determined what will be the primary element of the project, although for whichever element we choose as the focus, we will model the infiltration of the water into the surface using excel or another program capable of this analysis.

We originally considered taking down the wall between the ECJ parking lot and Waller Creek but we are concerned that removing the wall would alter the floodplain in a negative way. We are still looking into this idea.

Porous pavement works best in warm climates, which is perfect for Austin. One of the disadvantages for the porous pavement is the loading dock in the back of the ECJ parking lot. We are unsure of what the loading dock is used for- whether there are any hazardous chemicals and whether the loading dock needs to remain in this location. Porous pavement is not typically used in areas of high traffic loading docks. Therefore, we have started looking into the alternative of bioretention instead of the porous pavements and the rain garden. We will discuss our findings with Dr. Barrett next week and see which option we should move forward with.



On the next page, you can see two pictures taken in the ECJ parking lot.

